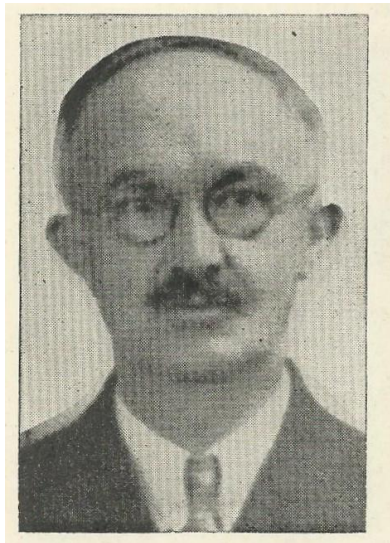


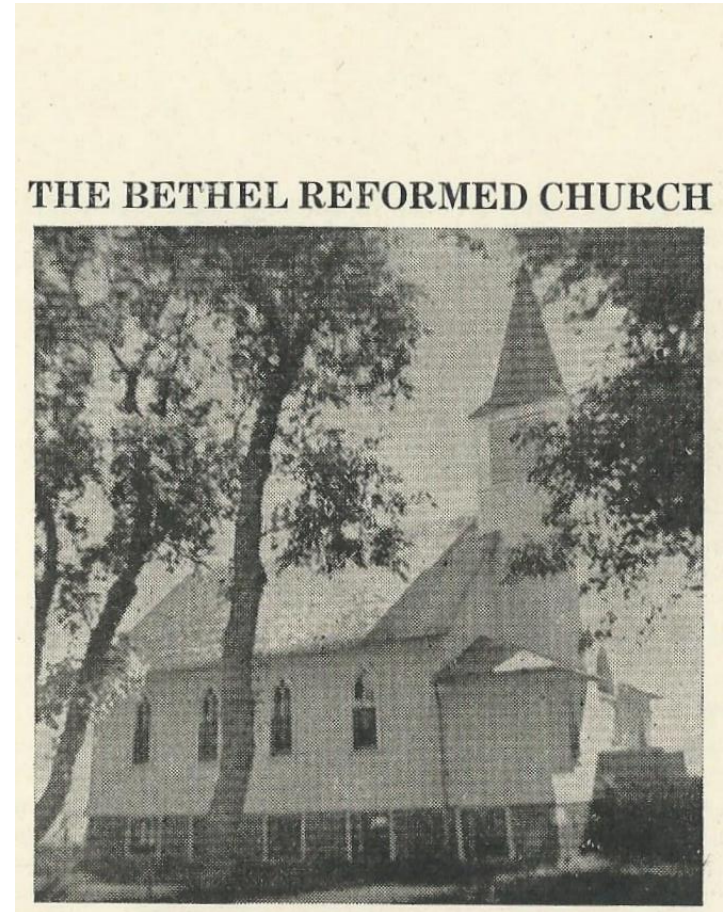
On April 30, 1935, a call was sent to Rev. Peter DeBuhr of Herman, Minnesota. Rev. DeBuhr accepted his call and was installed as Pastor of the Bethel Church on September 17, 1935. He was a staunch preacher who loved to preach in the East Friesland dialect.

In 1938 under the leadership of Pastor DeBuhr, the church was raised, and a basement was dug by hand labor using spades and horse-drawn scrapers by members of the congregation. A new furnace was given by Mrs. Weert Huisman Sr. Two small additions were added to the sanctuary on the south end. The addition on the west side of the church tower was used for seating. The east addition serves as a stairway to get to the basement. The whole project was completed for the sum of \$2,525.00.

The men who served on the building committee were Ed Popkes, Weert Huisman, and Henry Wiertzema.



On Sunday, October 19, 1944, the congregation was deeply shocked and saddened by the sudden passing of their beloved Pastor. He and his wife served the Bethel Church for nine years.



This photograph was taken in 1938.